

---

<b>Cable ID</b> K-NFM	<b>Summary</b> PASS	<b>Test Limit</b> TIA Cat 6 Perm. Link	<b>Length</b> 90.4 m	<b>Headroom</b> 6.2 dB (NEXT)	<b>Date / Time</b> 08/21/2023 08:13 AM
--------------------------	------------------------	---	-------------------------	----------------------------------	---

Total Length:	90.4 m
Number of Reports:	1
Number of Passing Reports:	1
Number of Failing Reports:	0
Number of Warning Reports:	0
Documentation Only:	0



**Cable ID: K-NFM**

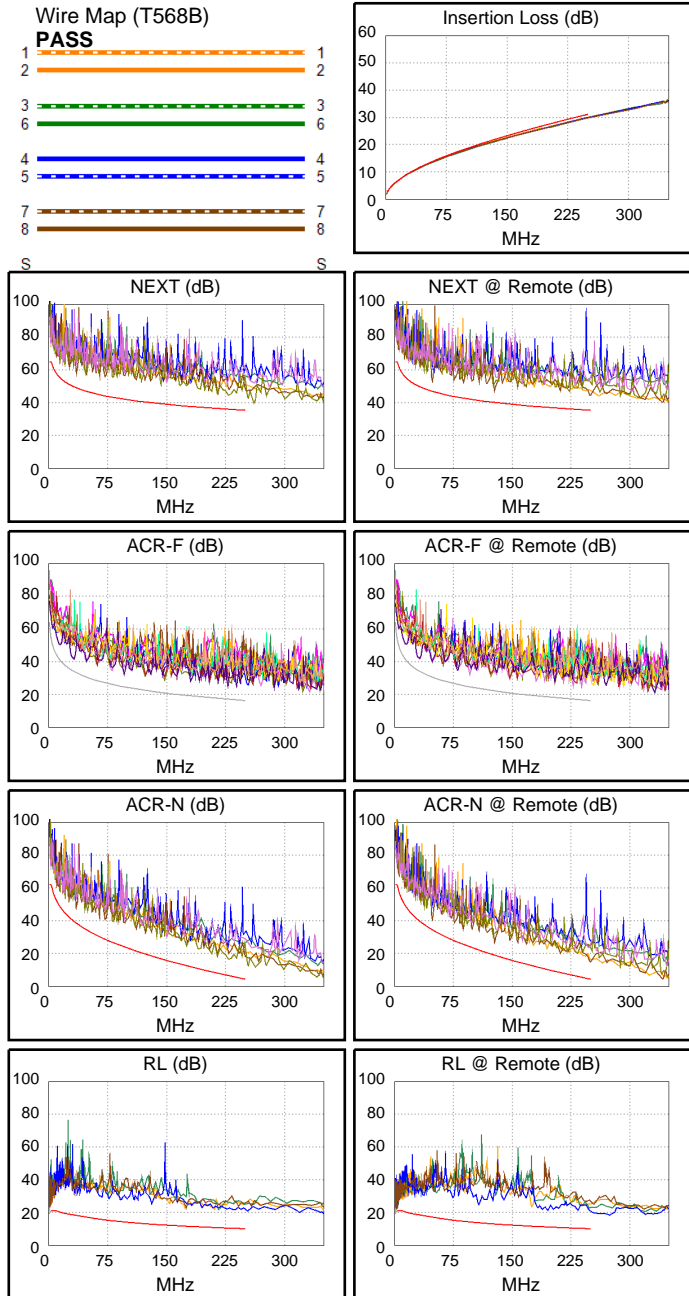
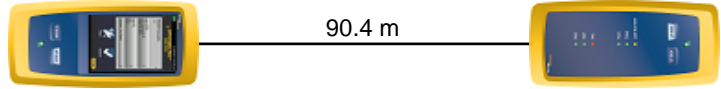
Date / Time: 08/21/2023 08:13:38 AM  
**Headroom 6.2 dB (NEXT 36-45)**  
**Test Limit: TIA Cat 6 Perm. Link**  
 Cable Type: Cat 6 U/UTP  
 NVP: 70.0%

Operator: Operator Name  
 Software Version: V6.0 Build 6  
 Limits Version: V7.0  
 Calibration Date:  
 Main (Module): 06/08/2023  
 Remote (Module): 06/08/2023

**Test Summary: PASS**

Model: DSX-8000  
 Main S/N: 1839610  
 Remote S/N: 1839609  
 Main Adapter: DSX-PLA804  
 Remote Adapter: DSX-PLA804

Length (m), Limit 90.0	[Pair 45]	90.4
Prop. Delay (ns), Limit 498	[Pair 12]	457
Delay Skew (ns), Limit 44	[Pair 12]	26
Resistance (ohms)	[Pair 12]	16.40
Insertion Loss Margin (dB)	[Pair 12]	1.1
Frequency (MHz)	[Pair 12]	248.0
Limit (dB)	[Pair 12]	31.0



**Worst Case Margin Worst Case Value**

<b>PASS</b>	MAIN	SR	MAIN	SR
Worst Pair	36-78	36-45	36-78	36-45
<b>NEXT (dB)</b>	7.9	6.2	7.9	9.1
Freq. (MHz)	229.0	48.3	229.0	249.5
Limit (dB)	36.0	47.0	36.0	35.4
Worst Pair	36	45	36	36
<b>PS NEXT (dB)</b>	8.3	8.2	8.3	8.7
Freq. (MHz)	216.0	48.3	216.0	250.0
Limit (dB)	33.8	44.5	33.8	32.7

<b>PASS</b>	MAIN	SR	MAIN	SR
Worst Pair	78-36	36-78	78-36	36-78
<b>ACR-F (dB)</b>	7.5	7.4	8.5	8.2
Freq. (MHz)	32.0	31.8	239.0	238.5
Limit (dB)	34.1	34.2	16.6	16.6
Worst Pair	36	36	36	78
<b>PS ACR-F (dB)</b>	9.4	9.9	9.9	11.0
Freq. (MHz)	205.0	29.6	228.0	239.0
Limit (dB)	15.0	31.8	14.0	13.6

<b>N/A</b>	MAIN	SR	MAIN	SR
Worst Pair	36-45	36-45	36-78	36-45
<b>ACR-N (dB)</b>	9.0	6.4	9.3	10.6
Freq. (MHz)	35.3	48.3	229.0	250.0
Limit (dB)	38.5	34.4	6.4	4.2
Worst Pair	36	45	36	36
<b>PS ACR-N (dB)</b>	9.4	8.3	10.2	10.6
Freq. (MHz)	216.0	48.3	229.0	250.0
Limit (dB)	5.2	32.0	3.8	1.6

<b>PASS</b>	MAIN	SR	MAIN	SR
Worst Pair	36	36	36	45
<b>RL (dB)</b>	7.1	4.5	10.7	9.9
Freq. (MHz)	3.8	3.8	216.5	250.0
Limit (dB)	21.0	21.0	10.6	10.0

Compliant Network Standards:  
 10BASE-T      100BASE-TX      100BASE-T4  
 1000BASE-T    2.5GBASE-T      5GBASE-T  
 ATM-25        ATM-51            ATM-155  
 100VG-AnyLan    TR-4              TR-16 Active  
 TR-16 Passive